

AGENDA SUPPLEMENT (1)

Meeting: Eastern Area Planning Committee

Place: Online meeting

Date: Thursday 10 September 2020

Time: 3.00 pm

The Agenda for the above meeting was published on 2 September 2020. Additional documents are now available and are attached to this Agenda Supplement.

Please direct any enquiries on this Agenda to Tara Shannon, of Democratic Services, County Hall, Bythesea Road, Trowbridge, direct line 01225 718352 or email tara.shannon@wiltshire.gov.uk

Press enquiries to Communications on direct lines (01225)713114/713115.

This Agenda and all the documents referred to within it are available on the Council's website at www.wiltshire.gov.uk

7 **Planning Applications (Pages 3 - 30)**

Slideshow presentation for EAPC

DATE OF PUBLICATION: 7 September 2020

This page is intentionally left blank

Eastern Area Planning Committee

10 September 2020 3.00pm

Membership

Page 4

Cllr Mark Connolly (Chairman)	Cllr Peter Evans
Cllr Paul Oatway QPM (Vice-Chairman)	Cllr Nick Fogg MBE
Cllr Ian Blair-Pilling	Cllr Richard Gamble
Cllr Stewart Dobson	Cllr James Sheppard

**18/09889/FUL - Land at South
Street, Avebury, SN8 1QZ
- agenda item 7a**

7a) 18/09889/FUL Land at South Street, Avebury, SN8 1QZ

Erection of dwellinghouse with garaging and access

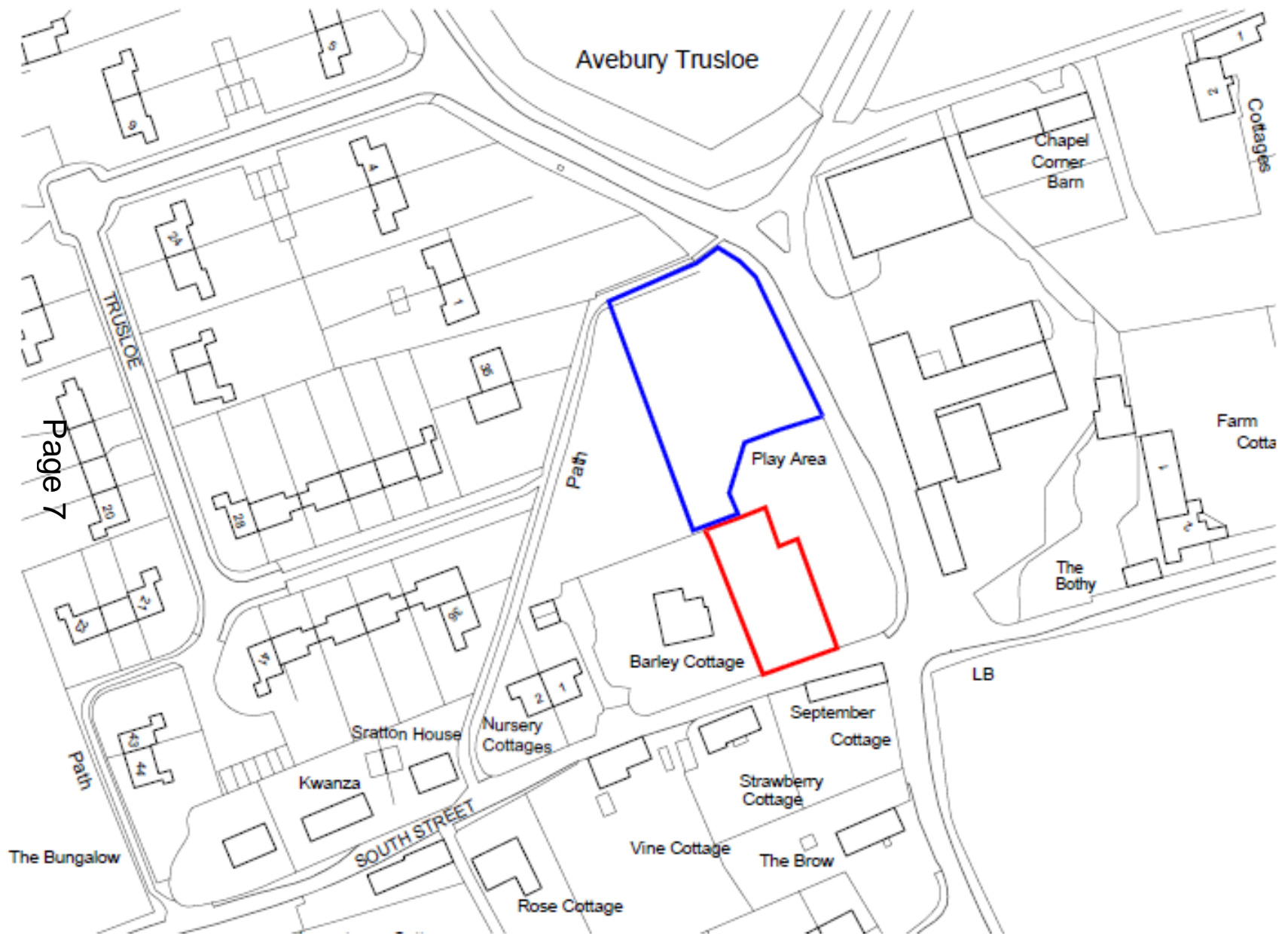
Recommendation: That planning permission be GRANTED subject to conditions



Site Location Plan



Aerial Photography



Avebury Trusloe

Chapel
Corner
Barn

Cottages

Farm
Cotta

The
Bothy

LB

Play Area

Barley Cottage

September
Cottage

Strawberry
Cottage

Vine Cottage

The Brow

Rose Cottage

Sratton House

Nursery
Cottages

Kwanza

SOUTH STREET

The Bungalow

Path

Path

TRUSLOE

Page 7





Page 9

Play area

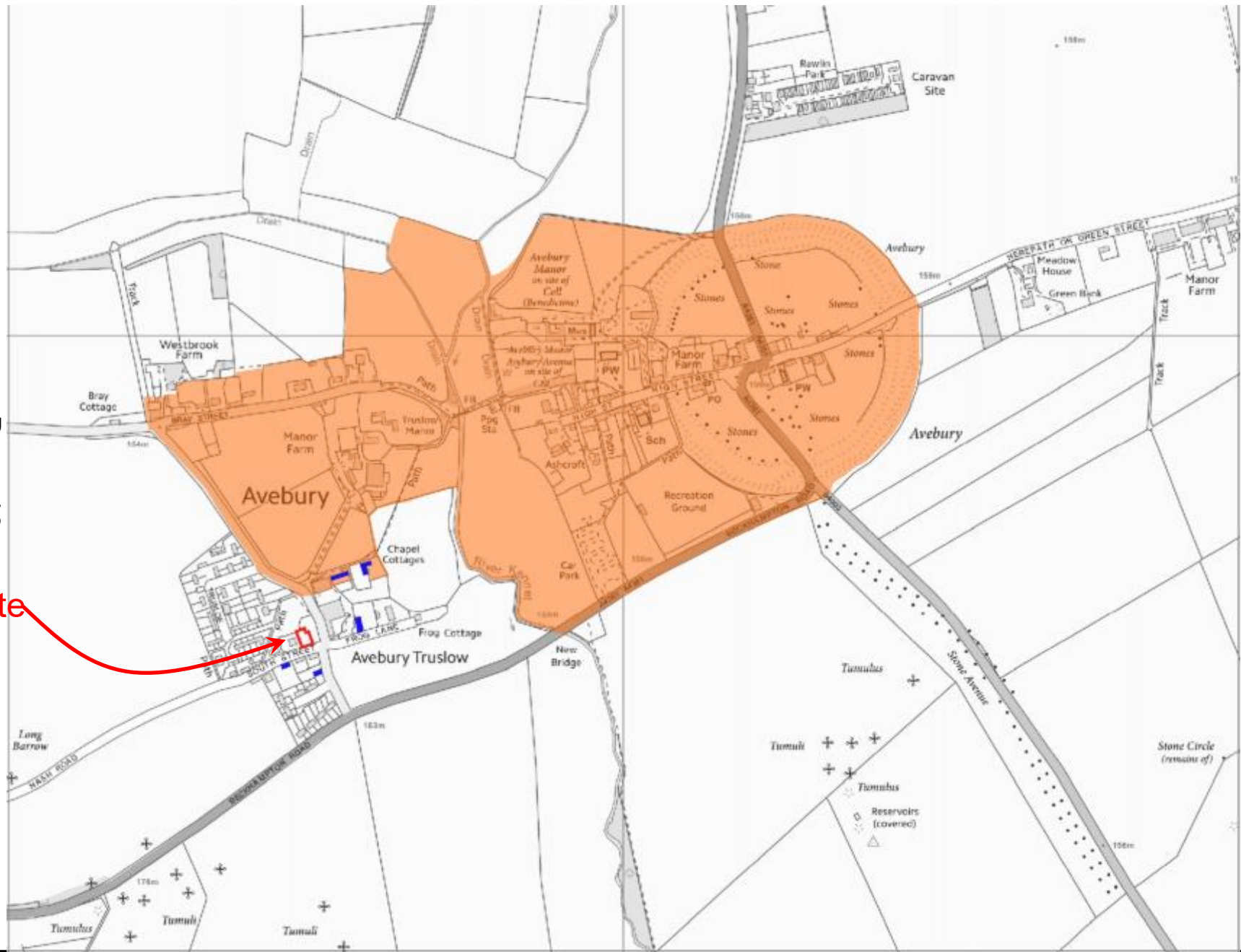
Barley Cottage

September Cottage

SOUTH STREET

Strawberry Cottage

Site

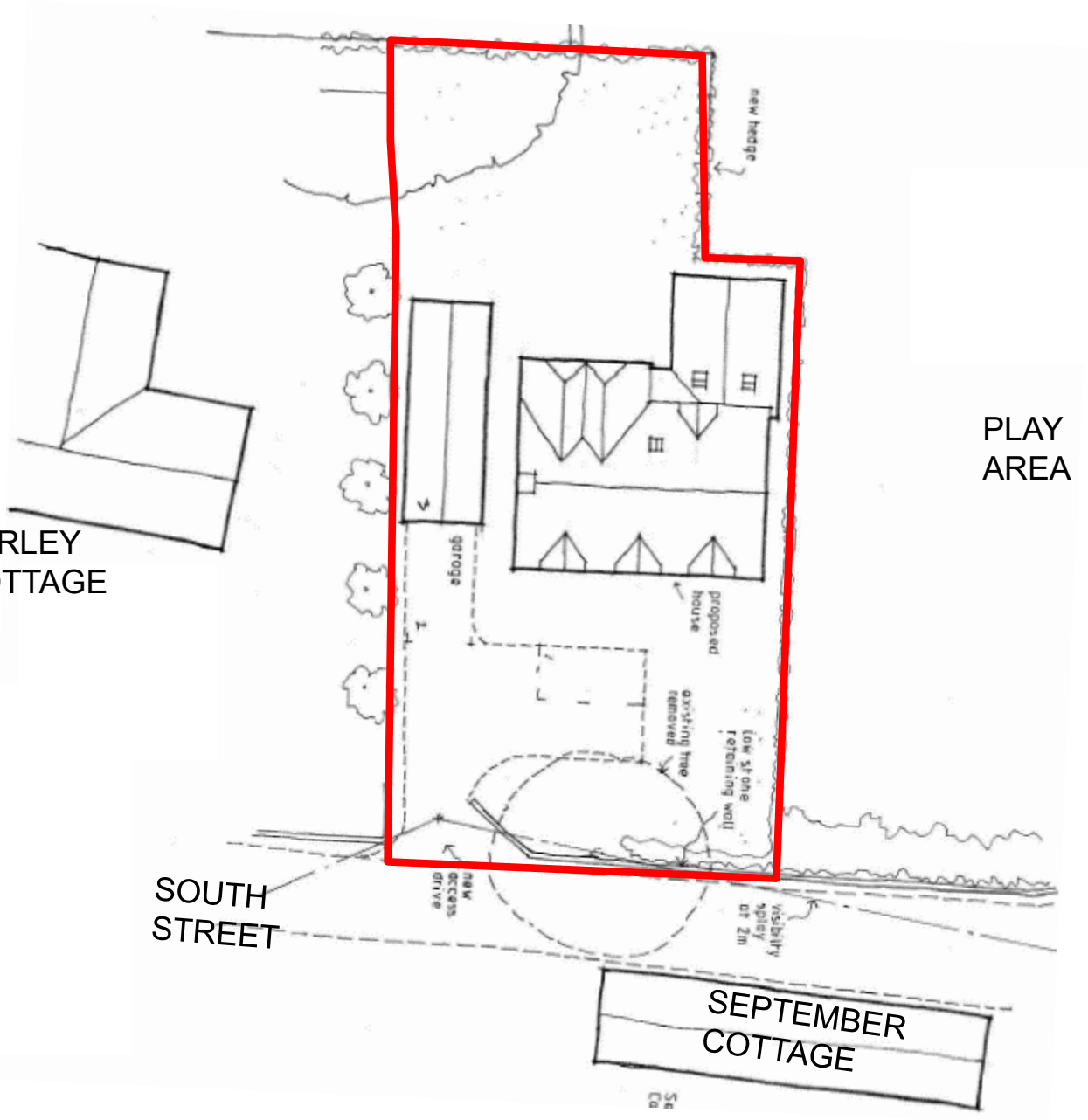


BARLEY COTTAGE

SOUTH STREET

SEPTEMBER COTTAGE

PLAY AREA



BARLEY
COTTAGE

PROPOSED



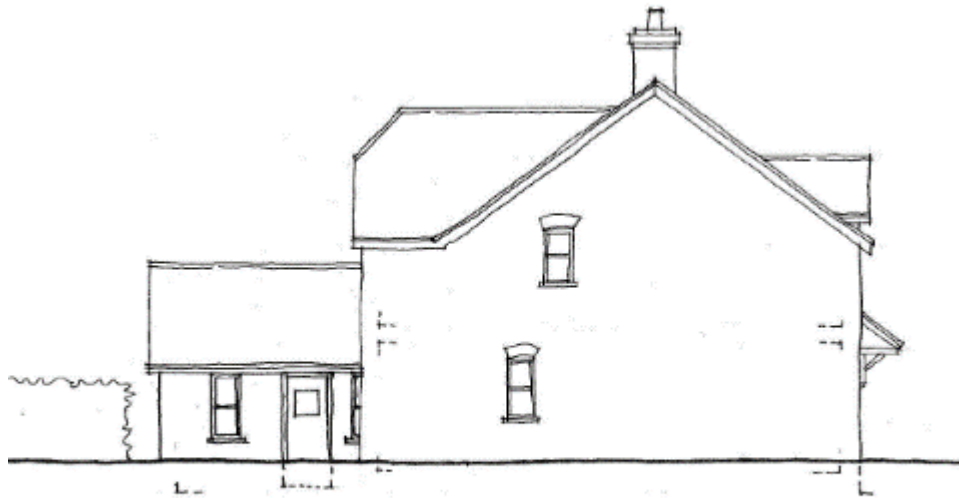


Barley Cottage

south elevation

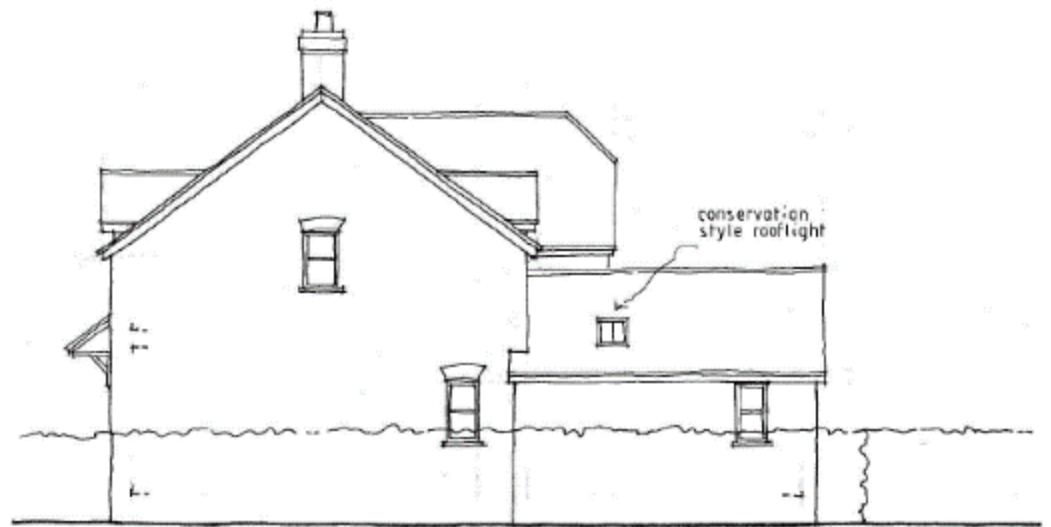


north elevation

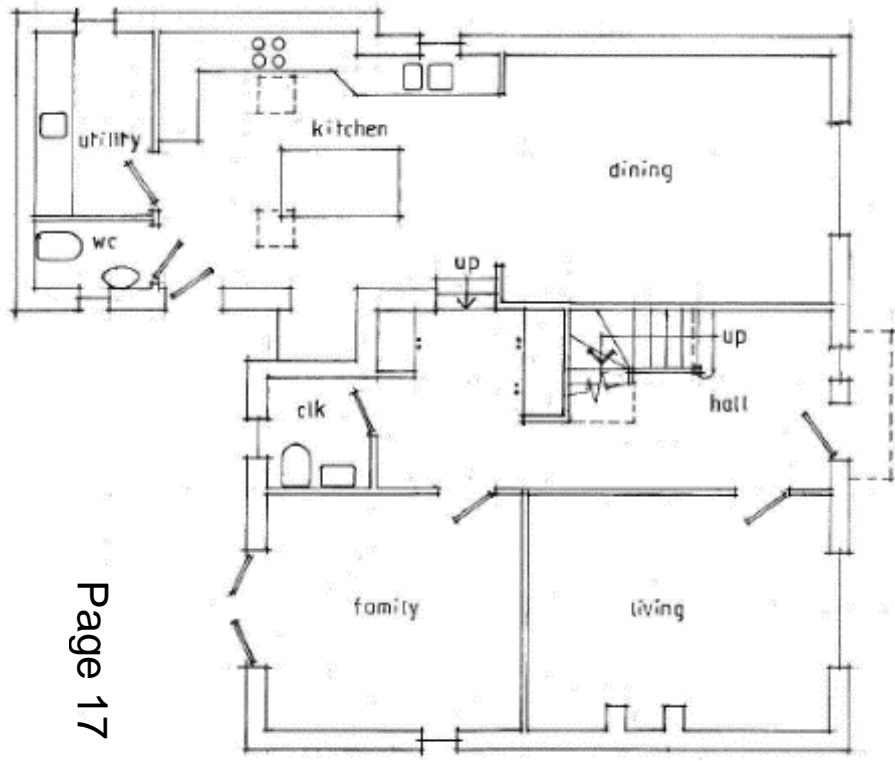


Page 16

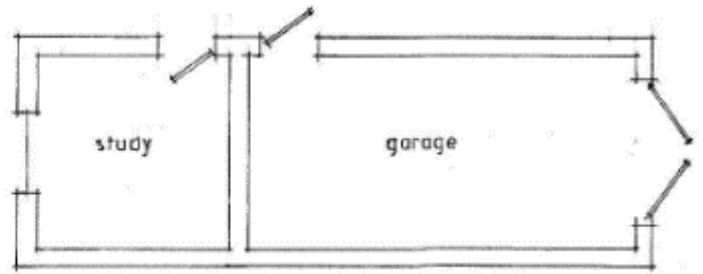
west elevation
TOWARDS BARLEY
COTTAGE



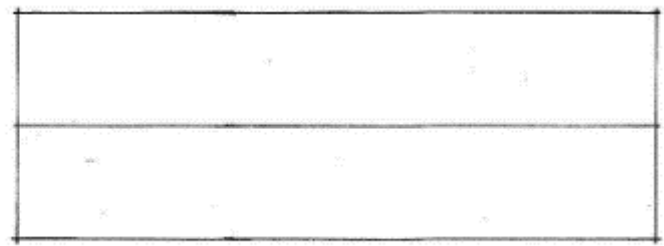
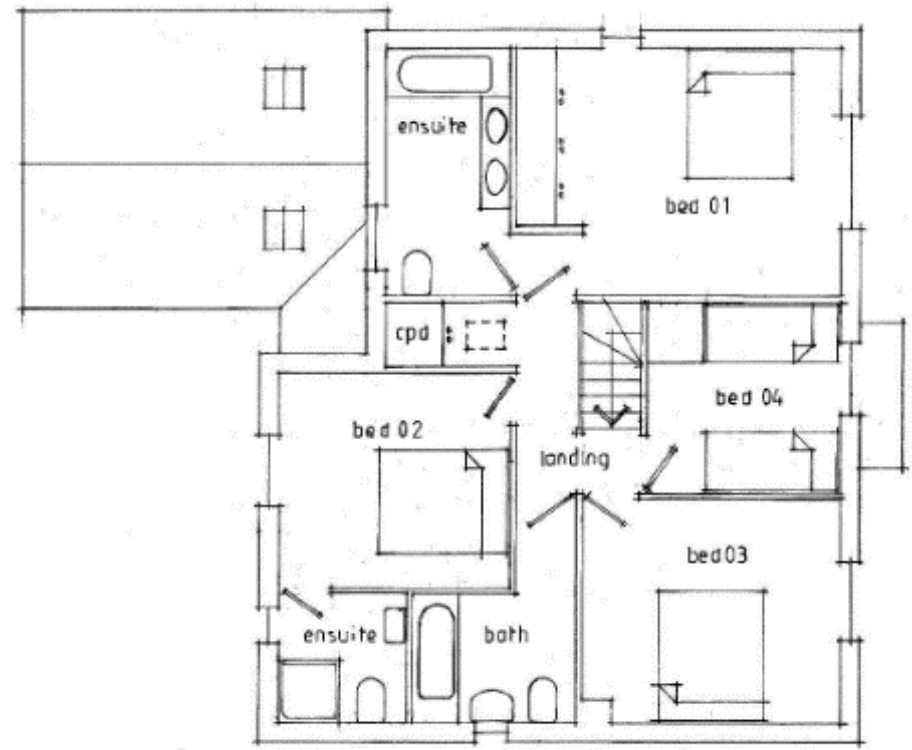
east elevation
TOWARDS PLAY AREA



Page 17



GROUND FLOOR



FIRST FLOOR



Page 18











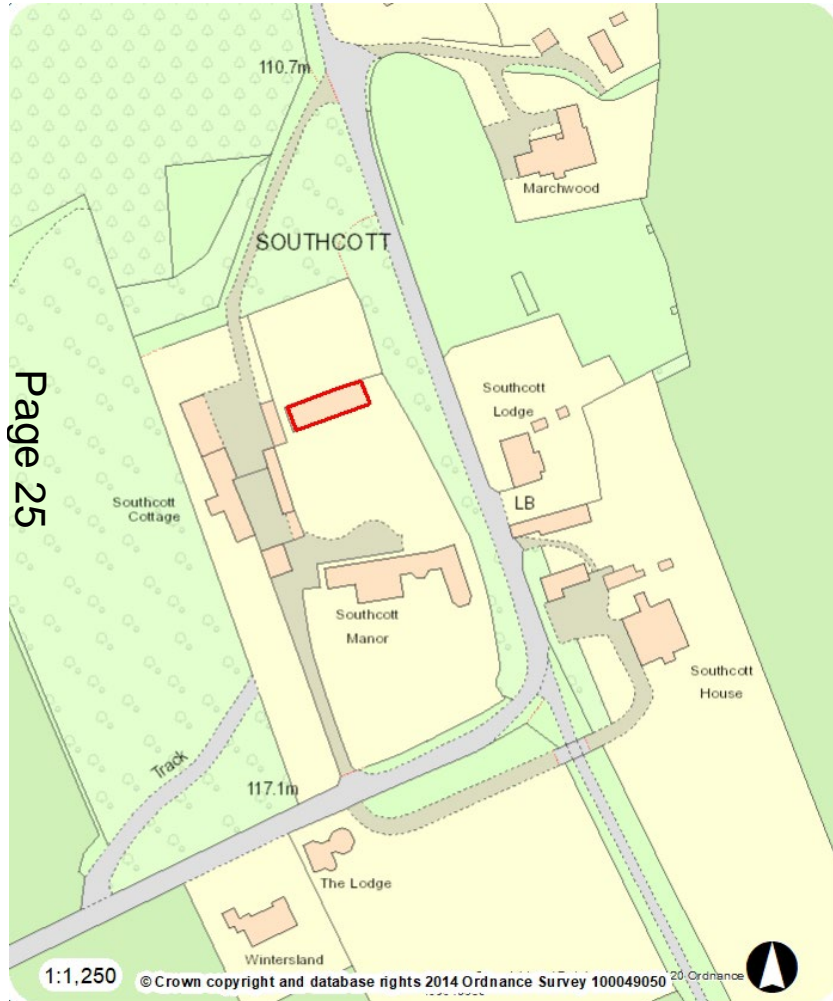
Page 23

20/03194/LBC & 20/04069/FUL
- Barn at Southcott Manor,
Southcott Road, Pewsey SN9 5JF
- agenda item 7b

7b) 20/03194/LBC & 20/04069/FUL Barn at Southcott Manor, Southcott Road, Pewsey, SN9 5JF

Installation of 2 no. glazed screens.

Recommendation: That listed building consent and planning permission be GRANTED subject to conditions

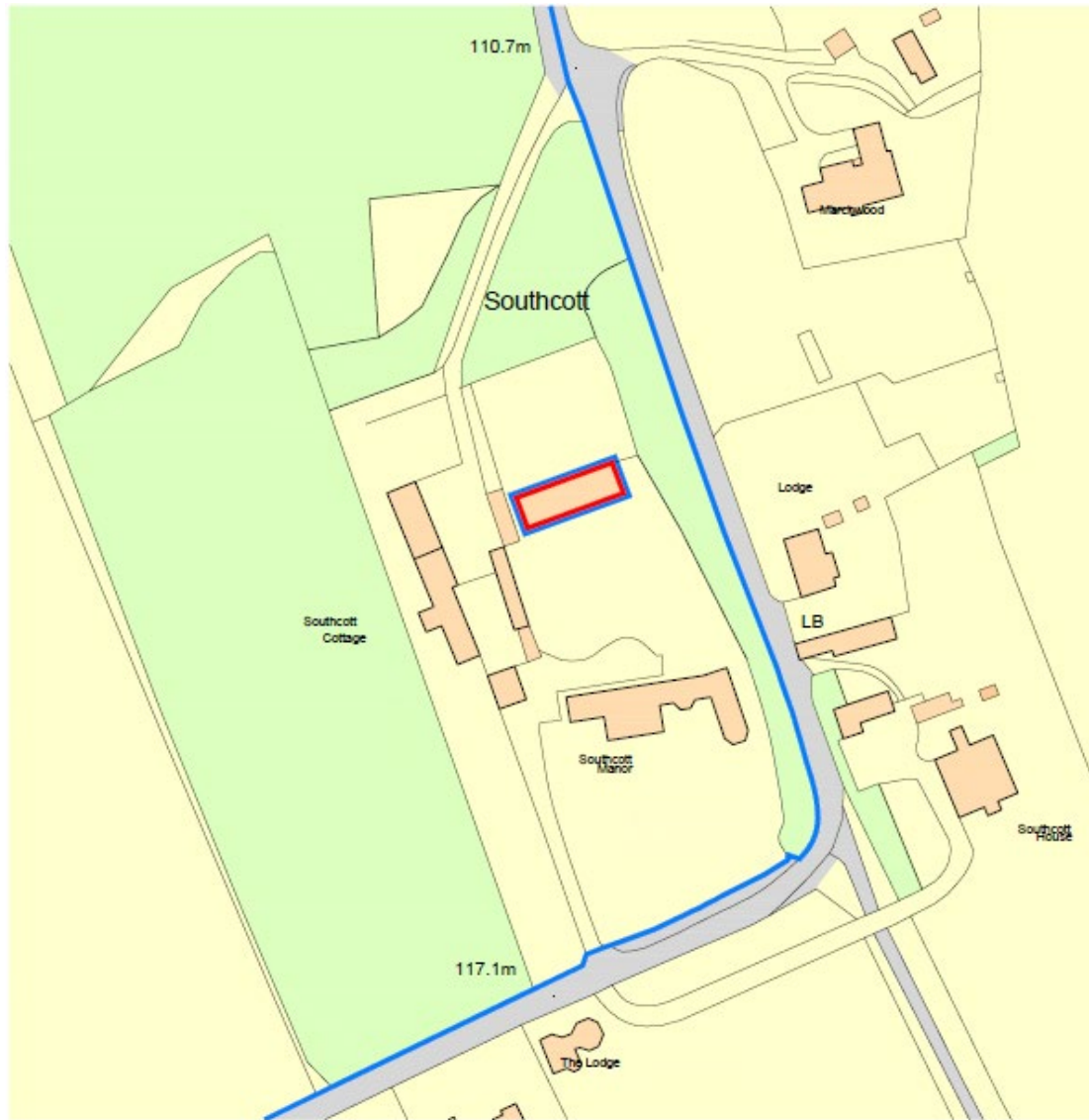


Site Location Plan

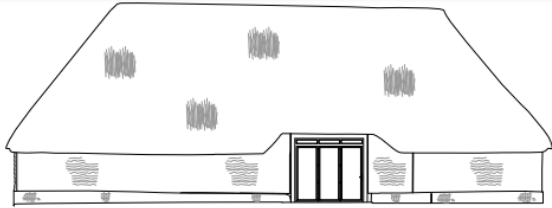


Aerial Photography

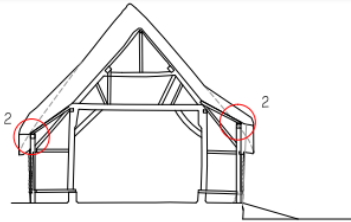
Site Location Plan



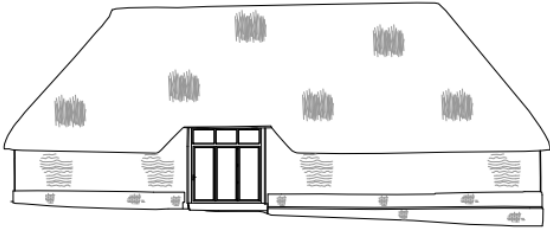
Current Plans



North Elevation



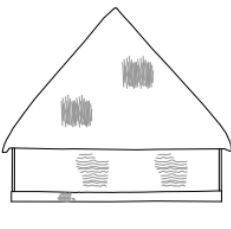
Section



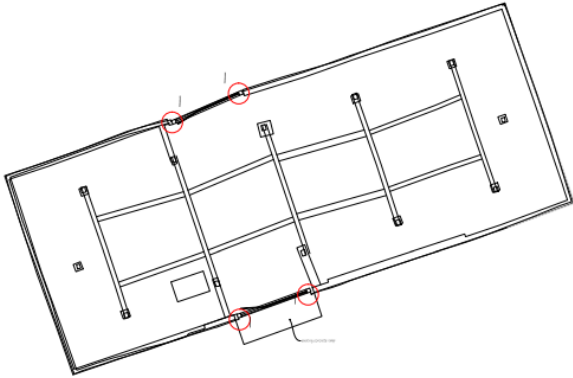
South Elevation



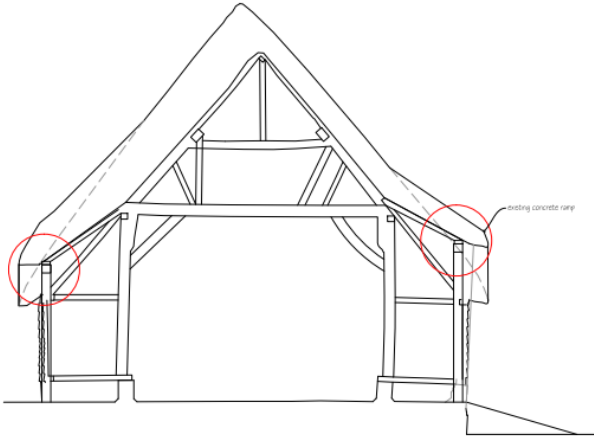
East Elevation



West Elevation



Plan



existing concrete ramp

Photos



Above: North elevation during re-thatching c.2014, prior to doors being inserted.



Above: doors in South elevation



North elevation, August 2020

Photos

Internal view of South elevation, August 2020



Above and below: Doors in North elevation, August 2020

Eastern Area Planning Committee

10 September 2020 3.00pm